

~CS Newsletter 11/5/2018~

Hello Computer Science majors! There are some job opportunities, ACM information, and a message about your well-being J Please read each section thoroughly, the application instructions and contact information for job opportunities are listed in the description for each position.

Pathways to the Faculty

This program provides a paid summer research experience including a **\$4500 stipend, free housing, and a travel allowance**. Participants will work with a faculty mentor on a research project, present results at the end-of-summer symposium, attend special workshops, and more!

*Applicants should be one year from graduating, **interested in a PhD**, and willing to learn about a faculty career.* Eligibility criteria includes: US Citizen, member of an underrepresented minority group in engineering, and pursuing an engineering or closely related bachelor's degree at a Minority Serving Institution. See complete eligibility, application, and program details at www.engr.purdue.edu/pathways.

Any questions may be directed to the program director, Dr. Audeen Fentiman at fentiman@purdue.edu.

This comes from:

Janet Beagle, Ph.D., Senior Director of Graduate Programs
Purdue University | College of Engineering
Email: jbeagle@purdue.edu
Phone: 765-494-0600

From our friends at LaborX: AllBirds (allbirds.com) has openings for Data Scientists and other CS-related jobs. Access through the LaborX site (you have to sign up, free for SFSU students): <https://laborx.co/jobseeker/jobs>

“Come join ACM—the largest computing club on campus! ACM is a nationally known organization and we have our very own chapter here at SF State.

Come join our Slack platform at sfsucomputerscience.slack.com! ACM partners with the CS department to provide students with resources to succeed professionally.”

ACM also provides weekly interview sessions every Tuesday from 4-6 PM in Sci 254

<https://cs.sfsu.edu/sites/default/files/F18TutoringSchedule.pdf>

ACM is hosting an Alumni panel on *November 6th from 5-7 PM at Lib 244*. A lot of SFSU's newest grads are going to be there and you can hear their stories and get to hear about their experiences. Come on by and network with them!

Temporary programmer job to re-implement scientific software

The programmer will study, understand, and re-implement the [Expression Variance and Evolution \(EVE\) model](#) which can be used to test hypotheses of expression level adaptation. The software has already been implemented in c, but is slow and cumbersome. The re-implementation will involve working with trees, dynamic programming, nested maximum likelihood routines, and statistics. Ideally, the software will be re-implemented as an R package. The programmer will have support through meetings with Rori Rohlf.

The ideal candidate will have demonstrated experience with

- scientific software development
- R package development
- efficient maximum likelihood routines
- tree data structures
- statistical analysis

Outstanding programmers may continue work in the lab if desired.

Applicants can email a cover letter and CV or resume to Rori Rohlf (rrohlf@sfsu.edu) by 26 November. Please don't hesitate to contact Rori with any questions or interest.

Our mission is: Delivering Analytics Advantage to Life Sciences and the Global 2000

Contact information:

Alok Goel

Manager, Talent Acquisition

Saama Technologies Inc.

Desk: +1 (408) 426 3928

E-Mail: alok.goel@saama.com

NEW COLLEGE GRADUATE

Does solving complex business problems and real world challenges interest you? Do you enjoy seeing the impact your contributions make on a daily basis? Are you passionate about using data analytics to provide game changing solutions to the Global 2000 clients? Do you thrive in a dynamic work environment that constantly pushes you to be the best you can be and more? Are you ready to work with smart colleagues who drive for excellence in everything they do?

If you possess a solutions mindset, and commitment to be part of a tremendous journey, come join our growing, global team. See what Saama can do for your career and for your journey.

Responsibilities:

- Learn Saama's platform and services using self-guided, computer-based and instructor led learning in any of the following:
 - Data Manipulation
 - Data Quality
 - Data Analysis
 - Data Science
 - Reporting and Dash boarding
 - Business Analysis
- Work in various areas with a mentor / assigned manager to evaluate interest and capabilities
- Perform back office or customer facing project related duties
- Document progress, learnings and contributing to knowledge base
- Create demos for sales and other purposes
- Participate in live customer projects once manager / resource management deems fit for the requirements
- Travel to customer site as necessary to perform project tasks
- Build internal IP (Intellectual property) for Saama

Impact on the business:

Through active learning, you will add innovation and new ideas to client projects and internal assignments.

Key relationships:

- Saama Sales and Pre-sales (BSG)
- COEs – Center of excellence around Big Data, Data Science, Data management etc.
- Resource Management Group
- Clients

Saama Competencies:

- INTEGRITY: we do the 'right' things.
- INNOVATION: we 'change the game.'
- TRANSPARENCY: we communicate openly
- COLLABORATION: we work as one team
- PROBLEM-SOLVING: we solve core, complex business challenges
- ENJOY & CELEBRATE: we have fun

Competencies:

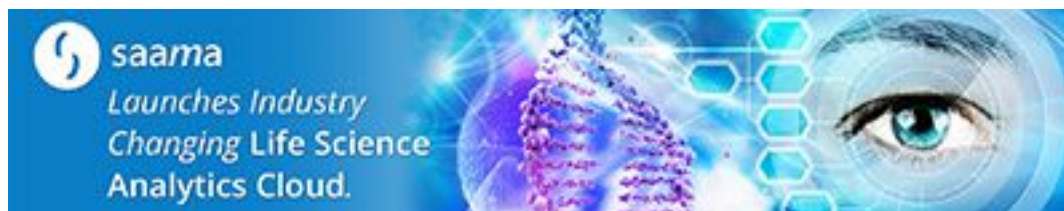
- Self-starter who gets results with minimal support and direction in a fast-paced environment.
- Takes initiative; challenges the status quo to drive change.
- Learns quickly; takes smart risks to experiment and learn.
- Works well with others; builds trust and maintains credibility.

- Planful: identifies and confirms key requirements in dynamic environments; anticipates tasks and contingencies.
- Communicates effectively; productive communication with clients and all key stakeholders communication in both verbal and written communication.
- Perseverance. Stays the course despite challenges & setbacks. Works well under pressure.
- Strong analytical skills; able to apply inductive and deductive thinking to generate solutions for complex problems.

Requirements:

- 4-yr degree in Computer Science, Information Systems Bio-Informatics, or relevant fields or Masters in relevant field.
- Demonstrated interest in developing expertise in applied data & analytics.
- Excellent Analytical skills
- Keen interest in Data and Analytics with a great problem solving attitude
- Understanding and knowledge of databases (Oracle, MySQL); knowledge of SQL
- Knowledge of Big Data technologies (MapReduce, Hadoop, Hive, Pig, Cassandra) is a plus
- Knowledge of Information Visualization, Information Retrieval, and Knowledge Discovery from Data, Algorithms in R or Python or NoSQL Databases are very helpful.

Saama Technologies is the advanced data and Analytics Company delivering actionable business insights for life sciences and the Global 2000. We are singularly focused on driving fast, flexible, impactful business outcomes for our clients through data and analytics. Our unique “hybrid” approach integrates focused solutions and expertise across the life sciences domain, business consulting, data science, automated data management, and big data technologies. We integrate manual and disconnected initiatives into a well-aligned roadmap facilitating the client’s journey from strategy through solution implementation.



This communication is confidential and subject to and governed by Saama’s [Electronic Communications Disclaimer](#).

Your well-being is IMPORTANT!

For students who are in distress, referrals can be made to the*Action Crisis Team*, Co-Chaired by Counseling & Psychological Services and Dean of Students Office via Yolanda Gamboa and Shimina Harris. Please visit <https://dos.sfsu.edu/content/concerned-about-student> for more information about resources for supporting students.